

# Sustainability Data

The Bridgestone Group discloses environmental, social, and governance (ESG) initiatives to its stakeholders via its Sustainability Report and the sustainability section of its website. *Annual Report 2020* contains a selection of quantitative information from those publications—which have been disclosed with reference to the ESG disclosure standard of the Sustainability Accounting Standards Board (SASB) for auto parts—and has been deemed particularly important for investors, the primary targets of this report.

## Detailed ESG Information

For more detailed information regarding our ESG areas, please refer to *Sustainability Report 2020–2021* (expected release date: June 29, 2021), or our website. The reporting period and scope of this are stated below.

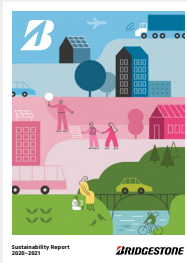
### Reporting Period

This report focuses on data and activities for fiscal 2020 (January 1 to December 31, 2020), although it also includes some information applicable to years prior and after fiscal 2020.

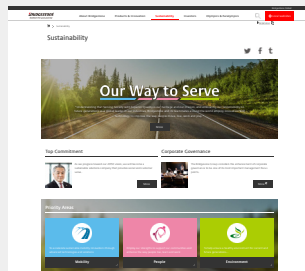
### Organizational Coverage

This report covers the initiatives of the Bridgestone Group, including Bridgestone Corporation and subsidiaries and affiliates around the world.

Sustainability Report



Website

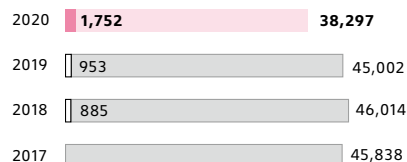


<https://www.bridgestone.com/responsibilities/index.html>

## Total Energy Consumption\*1

# 38,297 thousand GJ

Thousand GJ



■ Renewable energy\*2

The Bridgestone Group operates businesses around the world. The Group has been working to meet various global needs while creating sustainable value by enhancing social and environmental positive impacts. To this effect, the Group has implemented energy-saving measures in its plants and offices, seeking more effective use of limited energy resources. Total energy consumption (total consumption at manufacturing plants) decreased to 38,297 thousand GJ in fiscal 2020, a 14.9% decrease from the previous fiscal year.

\*1 Calculated by “fuel consumption + purchased electricity + purchased steam + solar power generation, etc. – electricity sold”

\*2 Disclosed from 2018

## Withdrawal of Freshwater\*

# 27,472 thousand m<sup>3</sup>

Thousand m<sup>3</sup>

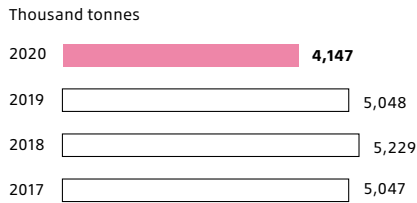


Cooling water and steam are important elements in the production process and the continued use of water resources cannot be separated from the continuation of business for the Group. The Group is therefore working to implement activities to reduce water withdrawal. Total withdrawal of freshwater decreased to 27,472 thousand m<sup>3</sup> in fiscal 2020, a 9.8% decrease from the previous fiscal year.

\* Does not include recycled water from third parties and rainwater

### Amount of Raw Materials Used

**4,147** thousand tonnes

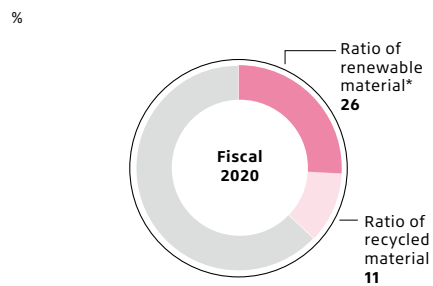


Given the increase in demand in light of population growth and people’s more convenient lifestyles, there are concerns that, if nothing changes, the growth in demand for raw materials will exceed the earth’s capacity. To avoid this, the Bridgestone Group is taking steps to improve its resource productivity\* by promoting new business models and the development of technology. In fiscal 2020, raw material consumption decreased to 4,147,000 tonnes, a 17.9% decrease from the previous fiscal year.

\* Sales per raw material used

### Ratio of Recycled and Renewable Material

**37%**

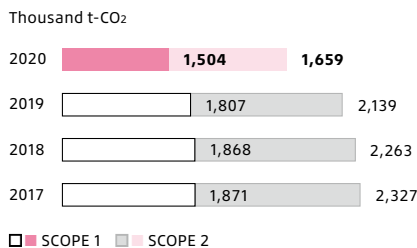


The increasing number of automobiles will likely boost tire demand in the future. However, with this increase comes the need to consider the increase in resource consumption and environmental consequences. As part of the Company’s efforts to value and protect natural resources, the Bridgestone Group uses recycled and renewable material. The ratio of recycled and renewable material was 37% in fiscal 2020.

\* Within total material weight for tire products including tire casing for retreading

### Greenhouse Gas Emissions\*

**SCOPE 1 1,504** thousand t-CO<sub>2</sub>  
**SCOPE 2 1,659** thousand t-CO<sub>2</sub>

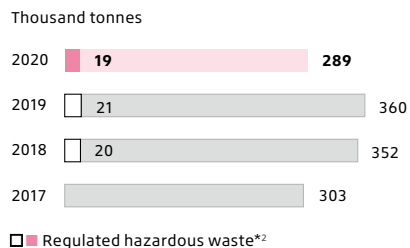


As a responsible corporate citizen, the Bridgestone Group is paying close attention to the ongoing and projected impacts of climate change and science-based CO<sub>2</sub> emission reduction goals. Based on the projections of the Intergovernmental Panel on Climate Change (IPCC) and other internationally recognized agencies, the Group has established a goal to reduce CO<sub>2</sub> emissions in its business operations. In fiscal 2020, scope 1 CO<sub>2</sub> emissions amounted to 1,504 thousand t-CO<sub>2</sub>, and scope 2 emissions amounted to 1,659 thousand t-CO<sub>2</sub>, with an overall decrease of 783,000 t-CO<sub>2</sub> compared to the previous fiscal year.

\* Calculated CO<sub>2</sub> emissions as GHG emissions

### Volume of Waste Generated\*1

**289** thousand tonnes



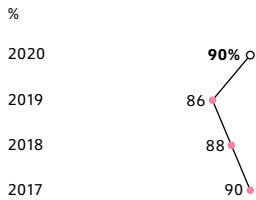
The Bridgestone Group strives to effectively use natural resources and to develop activities to promote them throughout their entire life cycles, from procurement to disposal and recycling, and is making efforts to reduce the volume of generated waste at each production facility and to reduce the occurrence of defective products through quality control. In fiscal 2020, the Group generated 289,000 tonnes of waste, a 19.7% decrease from the previous fiscal year.

\*1 Total volume of waste including non-hazardous waste and regulated hazardous waste

\*2 Disclosed from 2018

## Recycling Waste Rate

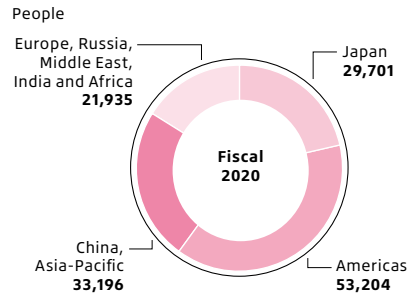
90%



The Bridgestone Group envisions a robust circular economy. As a part of its activities, the Group recycles waste generated at production facilities to the greatest extent possible for internal and external purposes. In fiscal 2020, the ratio of recycled waste was 90%.

## Number of Employees

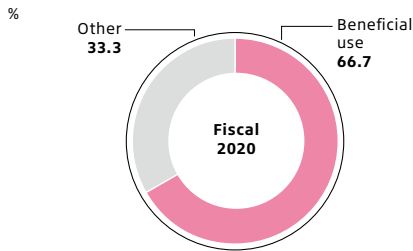
138,036



In fiscal 2020, the Bridgestone Group had 138,036 employees, which includes 53,204 employees in the Americas, 33,196 in China, Asia-Pacific, and 21,935 in Europe, Russia, Middle East, India and Africa.

## Reclaimed Products Rate\*

66.7%



End-of-life tires for passenger cars, trucks, and buses are repurposed and used to produce construction materials, rubberized asphalt, landscaping mulch, floor mats, tire-derived fuel, and even components and materials in new tires. In fiscal 2020, the ratio of reclaimed products was 66.7%.

\* Ratio of beneficial use such as material recycle, energy recovery, etc., except for retreads, based on latest statistical data of tires

## Lost-time Injury Frequency Rate\*1

Bridgestone Group 2.57  
Contractors\*2 2.31

The Bridgestone Group has established Global Criteria for Occupational Injury to classify injuries occurring at the Group's production, distribution, and sales facilities as well as warehouses. In addition to compiling injury statistics on a quarterly basis, the Group puts relevant investigation results to use in preventing similar injuries. In fiscal 2020, the lost-time injury frequency rate was 2.57.

\*1 Frequency rate = (number of lost-time injuries/total working hours) × 1,000,000

\*2 Aggregation starting from the second half of 2020