

# SHAREHOLDER INFORMATION As of January 1, 2017

## Head office

1-1, Kyobashi 3-chome, Chuo-ku,  
Tokyo 104-8340, Japan  
Phone: +81-3-6836-3333 Fax: +81-3-6836-3184  
www.bridgestone.com

## Established

1931

## Employees

143,616 (Consolidated)

## Independent auditors

Deloitte Touche Tohmatsu LLC

## Technical centers

Japan: Tokyo and Yokohama  
United States: Akron, Ohio  
Italy: Rome  
China: Wuxi  
Thailand: Pathum Thani

## Consolidated subsidiaries

294 companies

## Paid-in capital

¥126,354 million

## Shares

Authorized: 1,450,000,000  
Issued: 813,102,321

## Transfer agent

Sumitomo Mitsui Trust Bank, Limited  
4-1, Marunouchi 1-chome, Chiyoda-ku,  
Tokyo 100-8233, Japan

## Common stock traded

Tokyo, Nagoya, Fukuoka

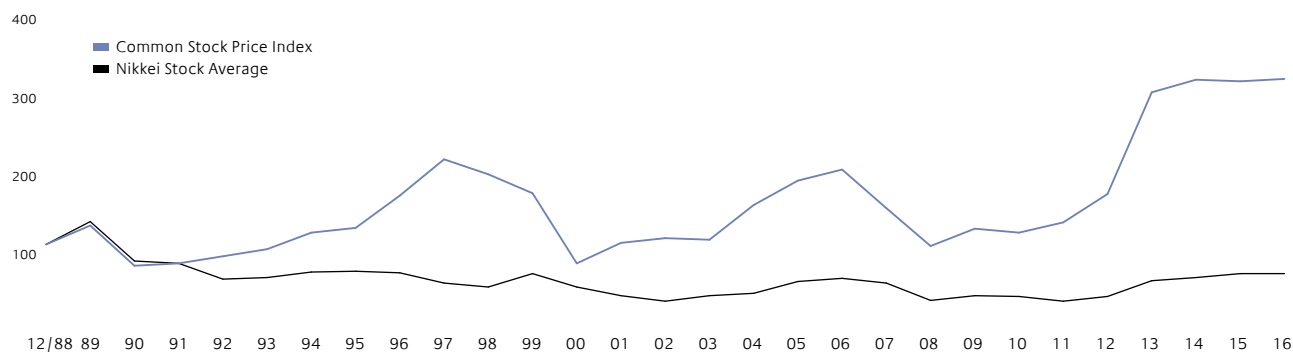
## Common Stock Price Range

(Tokyo Stock Exchange)

	2010	2011	2012	2013	2014	2015	2016
	Yen						
High	1,700	2,002	2,245	4,025	4,459	5,182	<b>4,463</b>
Low	1,396	1,506	1,602	2,248	3,328	3,754	<b>3,089</b>

## Common Stock Price Index

(Relative to Nikkei Stock Average)



Note: Relative value is based on 100 at the end of December 1988.